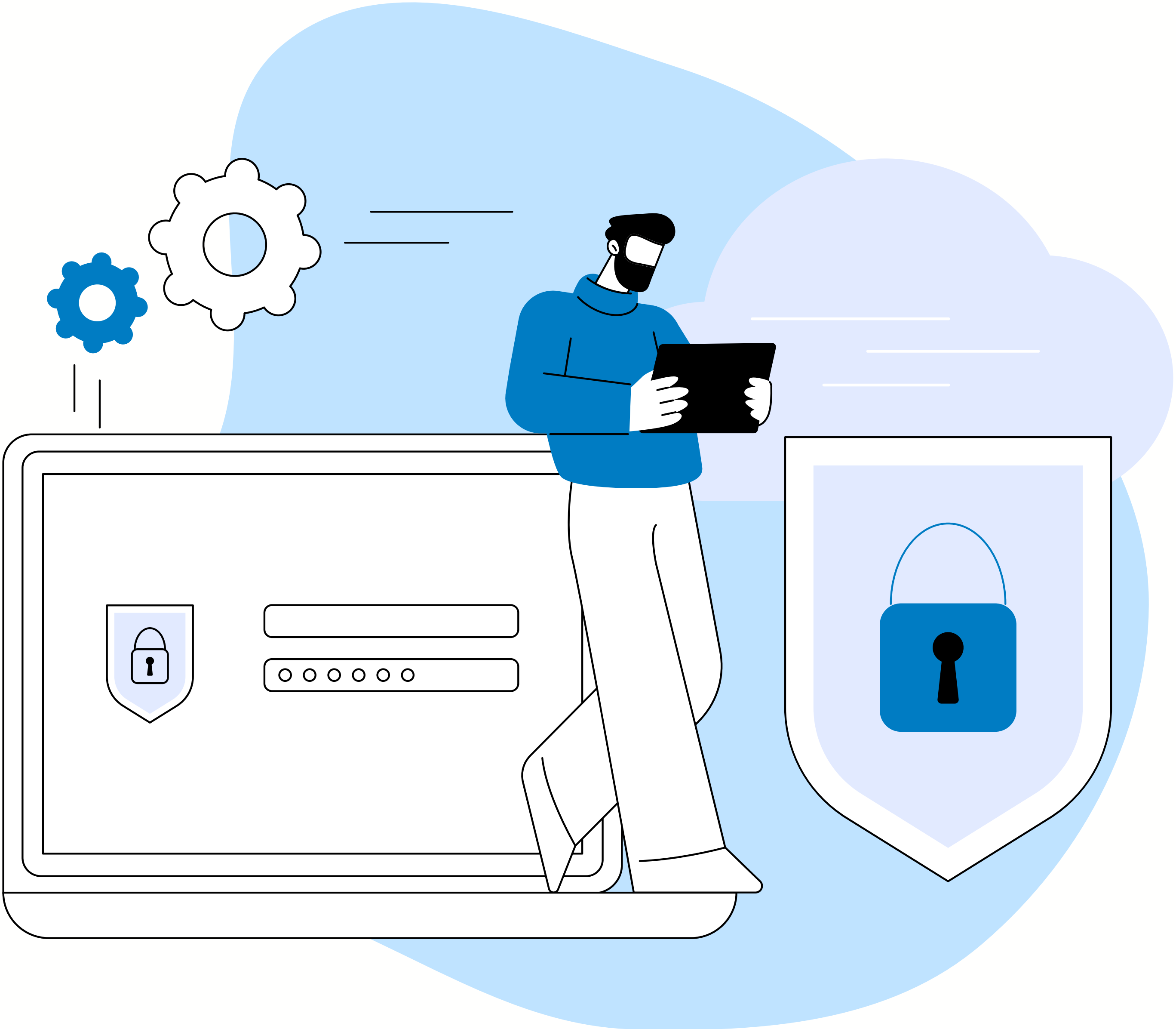
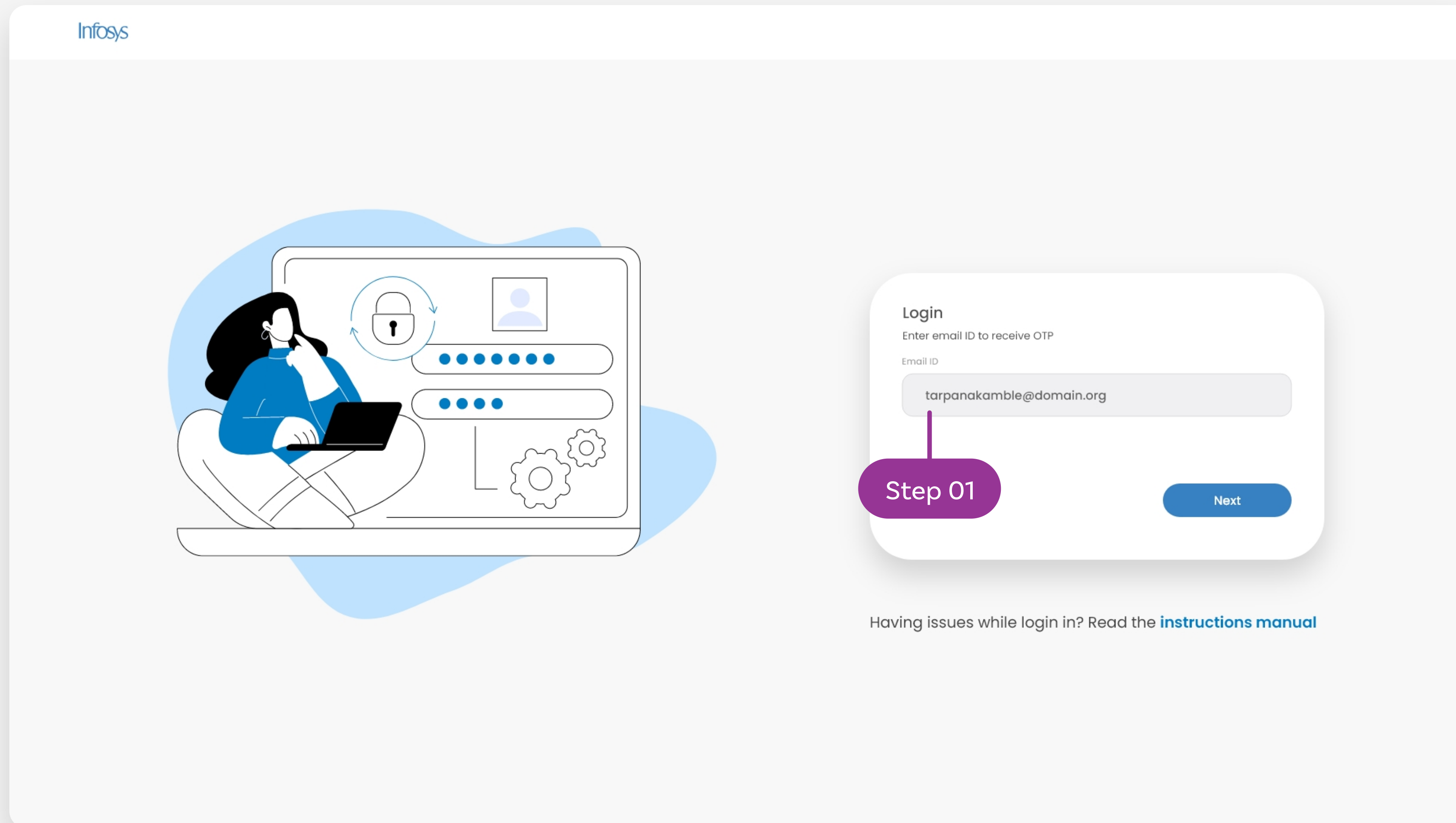


User Manual Guide For:

Logging Into The Portal





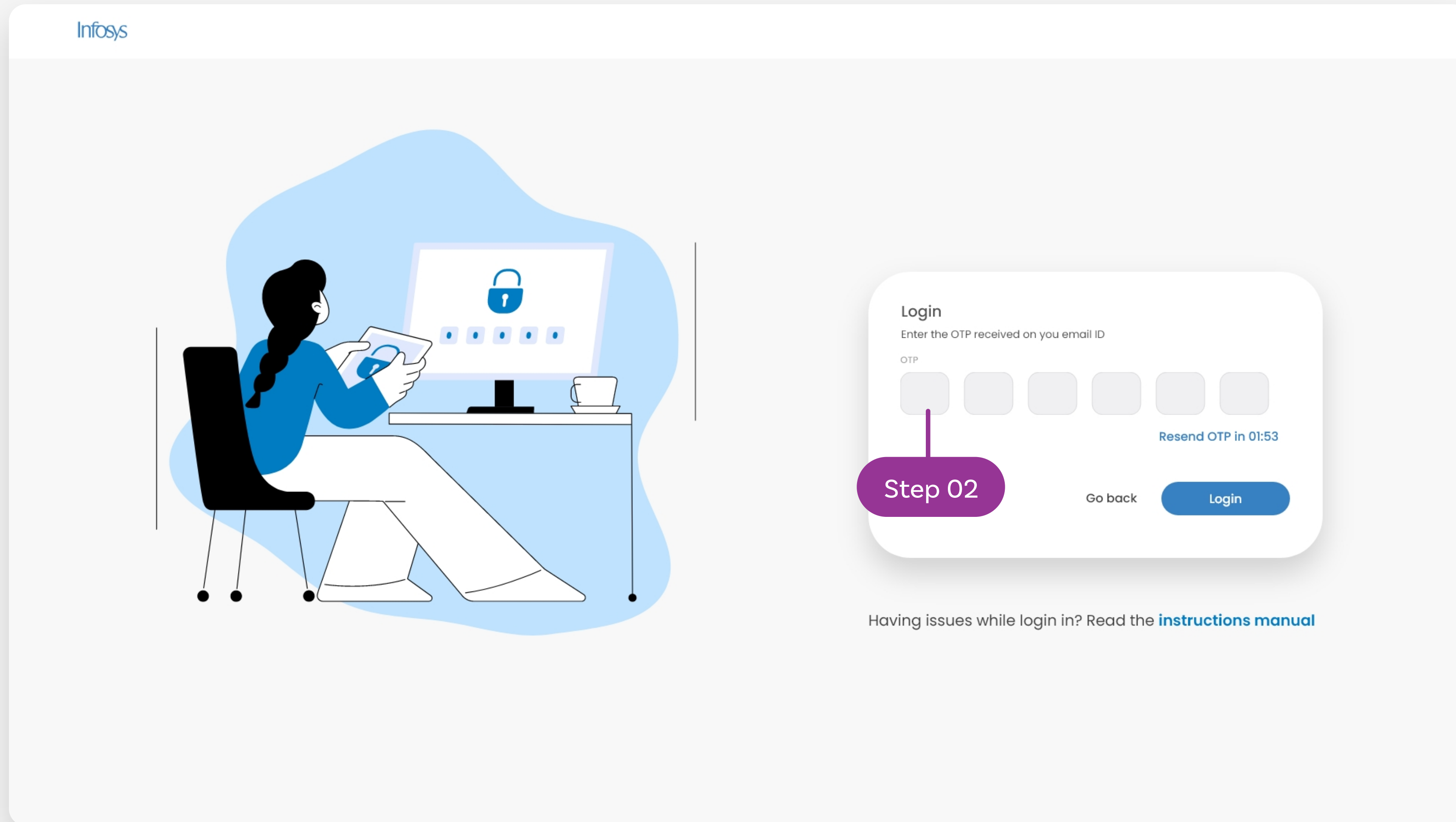
The screenshot displays the Infosys login interface. On the left, there is an illustration of a person sitting on a laptop with various icons representing login and system settings. On the right, the 'Login' form is shown with the following elements:

- Header:** Login
- Instruction:** Enter email ID to receive OTP
- Field Label:** Email ID
- Input Field:** Contains the email address `tarpanakamble@domain.org`.
- Buttons:** A purple 'Step 01' callout points to the input field, and a blue 'Next' button is located to the right.

Below the form, there is a link: [Having issues while login in? Read the instructions manual](#)

Step 01

To log in into the portal, you need to enter a valid email to receive an OTP and click "Next" button.



Step 02

Enter the OTP you have received on the provided email address and click "Login" button to log in