

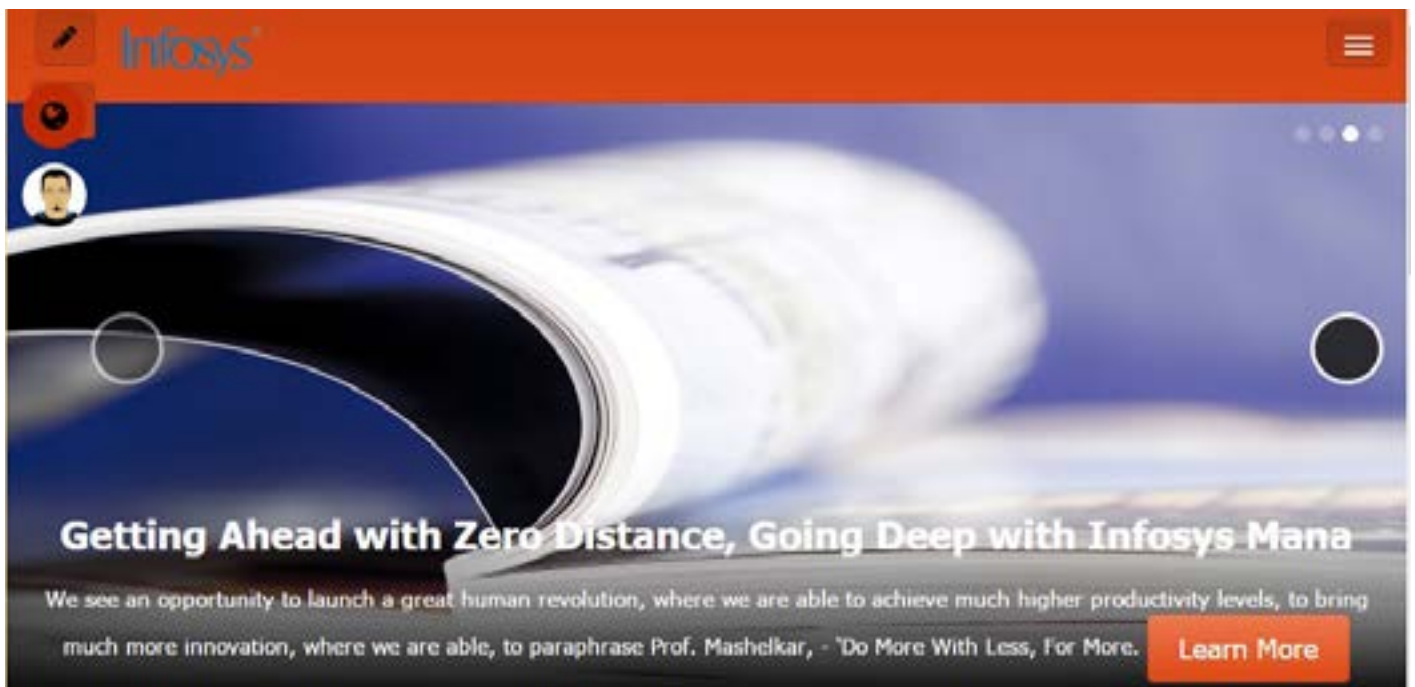
THE INFOSYS PORTAL SOLUTION

Accelerating portal solution development with a pre-built suite of components

What is the Infosys Portal Solution?

Infosys Portal Solution is a set of pre-built use cases developed on top of the Liferay stack, which offers reusable and flexible templates, themes, web analytics integration, and various solution components to accelerate solution development. The Infosys Portal Solution enables Liferay developers to accelerate solution development using production-ready components and reduces time-to-market with high quality deliverables. The Infosys iPortal has a pre-built site, portlets, web content structures, workflows, and pre-integrated collaboration features for quicker time-to-market with increased developer productivity.

Supported Platforms: Liferay 6.2 EE and Liferay 6.2 CE
Liferay Marketplace URL: <https://web.liferay.com/en/marketplace/-/mp/application/78105620>

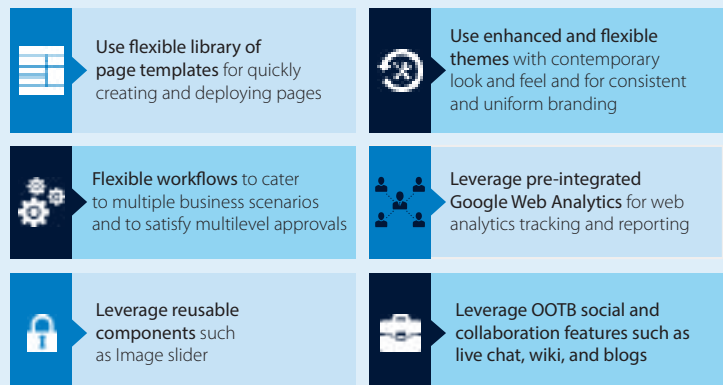
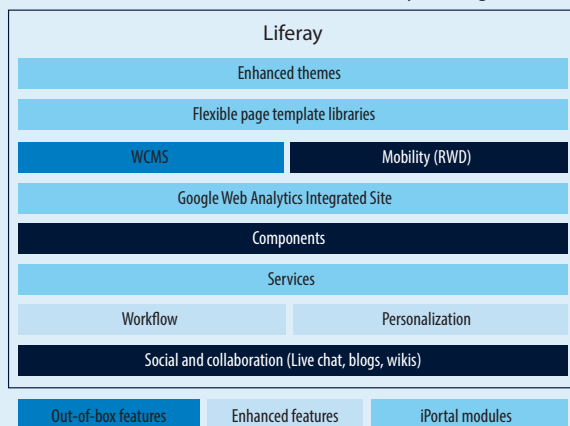


Infosys Portal Solution: Value proposition

A high-level list of solution components for the Infosys Portal Solution is shown below.

Infosys Liferay Solution: Infosys Portal Solution

Infosys Portal Solution is a set of pre-built use cases developed on top of Liferay stack which offers reusable and flexible templates, themes, web analytics integration, and various solution components to accelerate solution development.

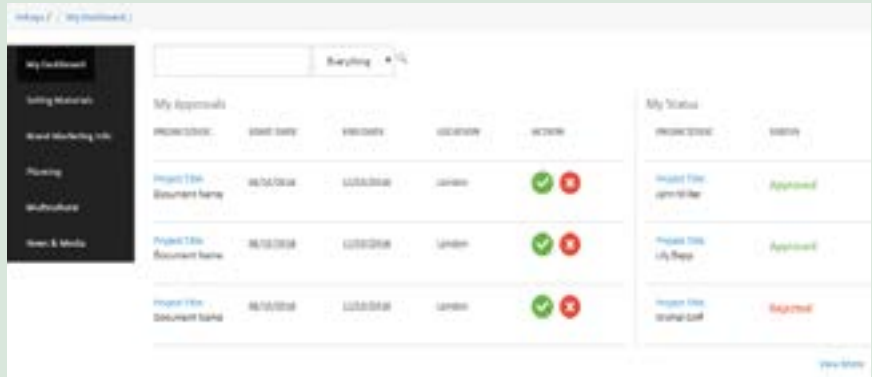


A full-featured Infosys Portal Solution has the following enterprise-ready components:

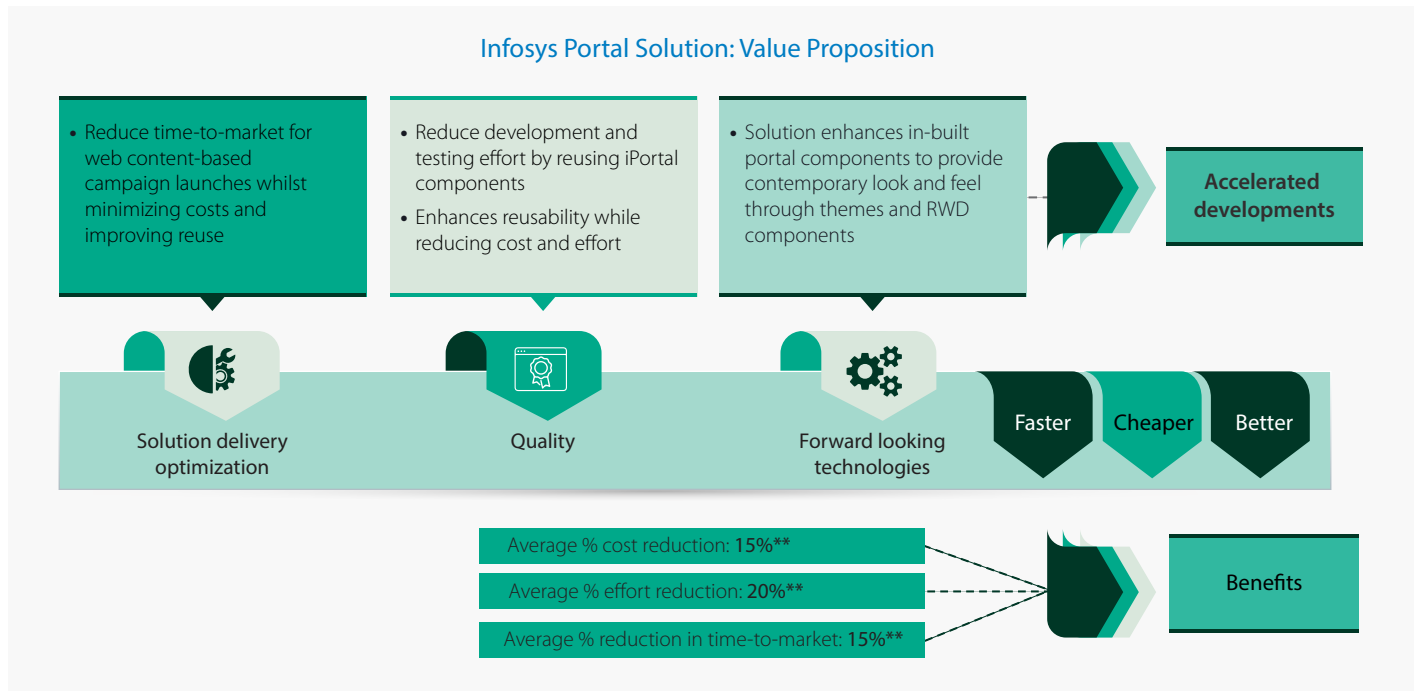
1. Responsive bootstrap-enabled iPortal theme
2. Pre-built site with login, welcome, solutions, services, products, support, blog, FAQ, contact, news, and About pages
3. Application display templates
4. Configurable auto-hide navigation menu
5. Enhanced multistep workflow
6. 13 ready-to-use custom page layouts
7. 10 ready-to-use custom structures and templates
8. Bootstrap home page carousel
9. Offers pre-integrated chat and Google Web Analytics module
10. Home page tiles
11. Footer (simple)
12. Footer (social)
13. Graph (bar)
14. Graph (pie)

The Liferay community can benefit from Infosys Portal Solution in the following ways:

- Reuse existing components to quickly build the solution. Reduce development and testing efforts by reusing iPortal components
- Accelerate solution development with high quality and reduced time-to-market
- Leverage a contemporary and forward-looking UI



The key value proposition of the platform is given below.



** This is indicative number for best possible scenario.

For more information, you can get in touch with shailesh_shivakumar@infosys.com and Rahul_Krishan@infosys.com

For more information, contact askus@infosys.com



© 2018 Infosys Limited, Bengaluru, India. All Rights Reserved. Infosys believes the information in this document is accurate as of its publication date; such information is subject to change without notice. Infosys acknowledges the proprietary rights of other companies to the trademarks, product names and such other intellectual property rights mentioned in this document. Except as expressly permitted, neither this documentation nor any part of it may be reproduced, stored in a retrieval system, or transmitted in any form or by any means, electronic, mechanical, printing, photocopying, recording or otherwise, without the prior permission of Infosys Limited and/ or any named intellectual property rights holders under this document.